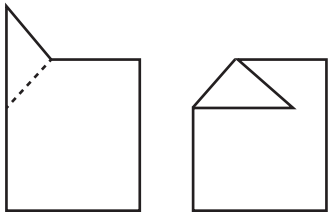


Materials

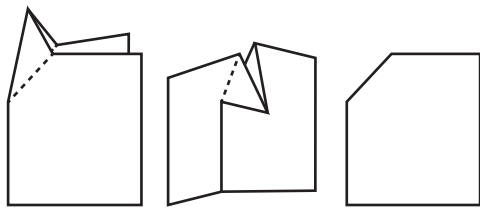
- One 6x9 printout (front and back of card)
- One 8x9 printout (inside of card with tree)
- One printout of star and SPY KIDS gadgets
- Scissors
- Glue or Glue Stick
- Crayons, paint, glitter, and anything you want for decorating.

Construction

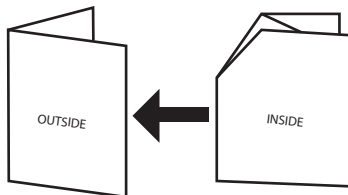
1. Cut out both the 6x9 and 8x9 printouts, following the solid black line.
2. Fold both the 6x9 and 8x9 printouts in half following the dotted line. Set aside the 6x9 (front and back printout).
3. Fold 8x9 printout (inside of card with tree) back in half with dotted lines showing. Fold diamond shape down following dotted line.



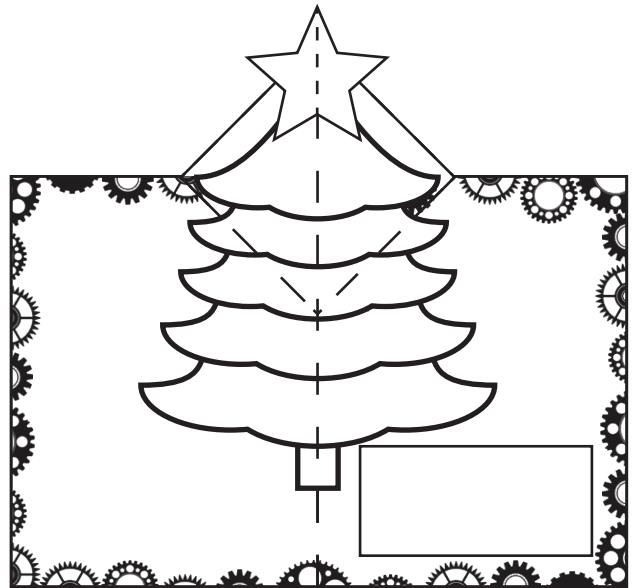
4. Open card again and fold the diamond shape inside card. When the card is opened the diamond shape should pop-up.



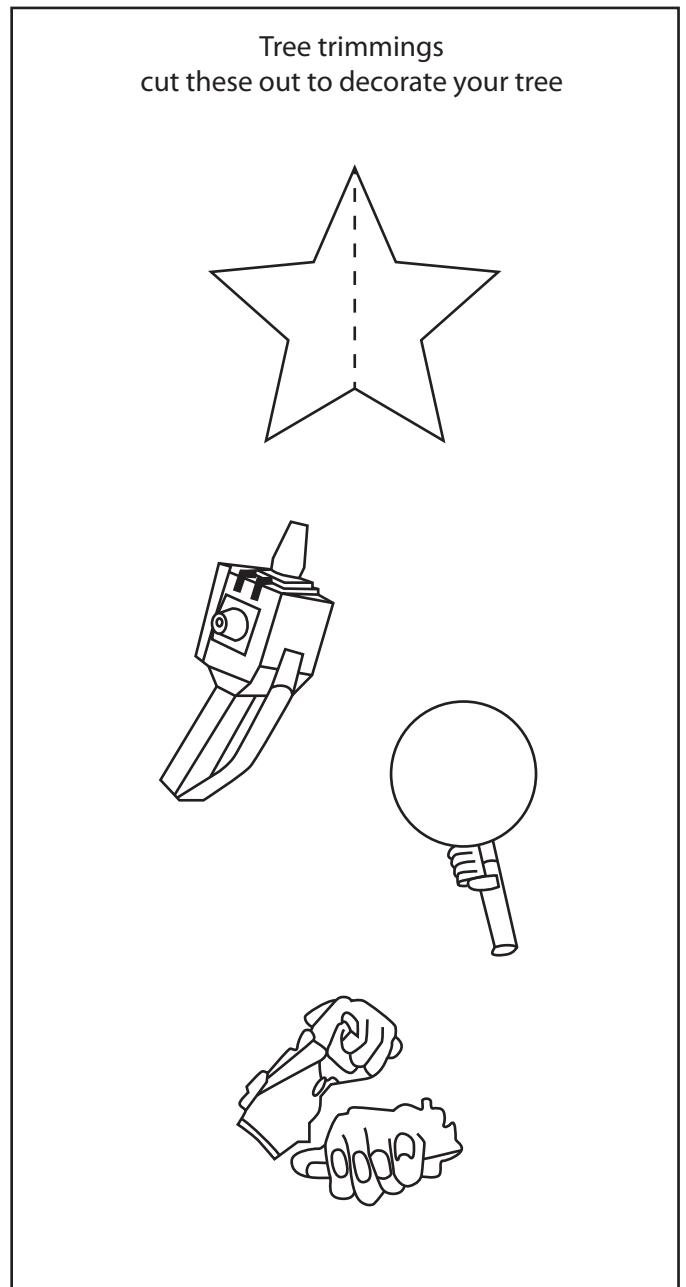
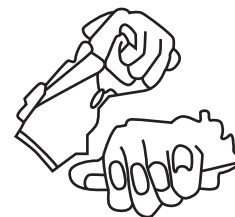
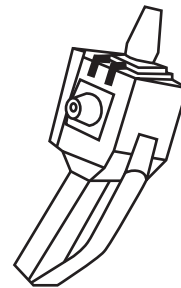
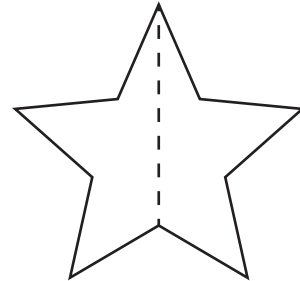
5. Keep the diamond shape folded inside card. Glue the 6x9 printout (front and back) to the back of the inside card taking care not to get glue on diamond shape pop-up.



6. Cut out star and SPY KIDS gadgets.
7. Decorate!
8. Add a secret message using the SPY KIDS code.



Tree trimmings
cut these out to decorate your tree



SPY KIDS
ALL THE TIME IN THE WORLD

TOP SECRET
OSS
HOLIDAY
MISSION

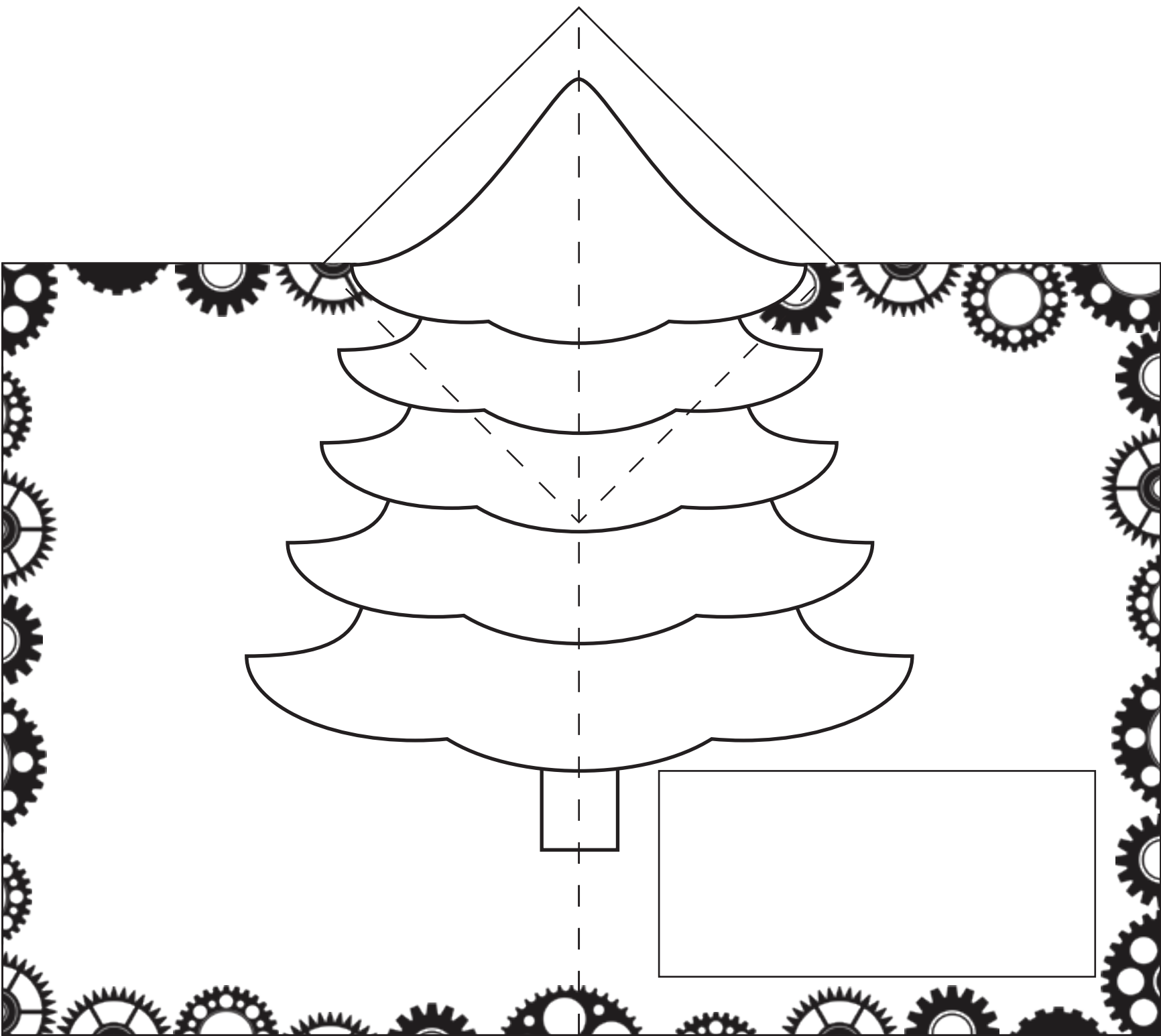
Open to Activate

© 2011 Spy Kids 4 SPV, LLC. "Spy Kids" marks used with permission of The Weinstein Company LLC. All Rights Reserved.

THE
WEINSTEIN
COMPANY
HOME ENTERTAINMENT

ANCHOR BAY
ENTERTAINMENT

TROUBLEMAKER STUDIOS DIMENSION
FILMS



Spy Kids Secret Message Code

Keep your top secret holiday message from prying eyes by using the cipher on this page. Just replace the letters of your message with the letters below. Don't forget to send this cipher separately to the friend or family member that is receiving your holiday card so they can decode your message!

A	▶	R	H	▶	K	O	▶	D	V	▶	W
B	▶	Q	I	▶	J	P	▶	C	W	▶	V
C	▶	P	J	▶	I	Q	▶	B	X	▶	U
D	▶	O	K	▶	H	R	▶	A	Y	▶	T
E	▶	N	L	▶	G	S	▶	Z	Z	▶	S
F	▶	M	M	▶	F	T	▶	Y			
G	▶	L	N	▶	E	U	▶	X			

Example

"I would like a new bicycle for Christmas" would become "J VDXGO GJHN R ENV QJPTPGN MDA PKAJZYFRZ"